

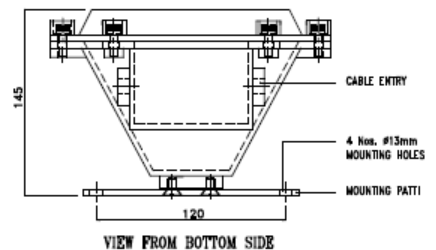
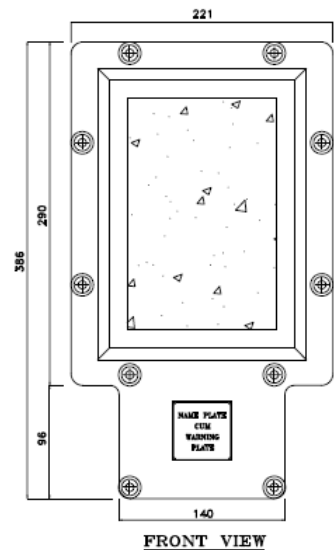
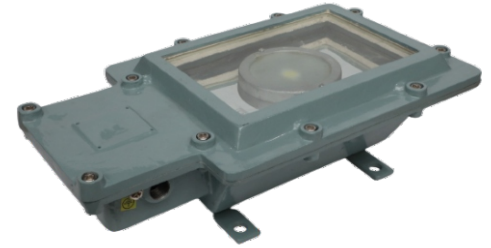


DATA SHEET FOR FLP BULKHEAD LIGHT FITTING

BULKHEAD IIA & IIB UP TO 45 W LED

TECHNICAL DATA:

PRODUCT	: CAT. NO.- BH/124
ENCLOSURE	: FLAME PROOF (Ex -d), Gas Group IIA, IIB As per IS/IEC 60079-1: 2014
AREA & TEMP. CLASS	: Ex db IIA & IIB C T6 Gb (EX TB / TC IIIC T85 C Db/Dc (ZONE 1 & 2, ZONE 21 & 22)
CERTIFICATION	: CIMFR, BIS, PESO
TEMPERATURE CLASS	: T6
MATERIAL	: DIE CAST ALUMINIUM ALLOY
FINISH	: EPOXY POWDER COATED SHADE AS PER IS: 5
EARTHING	: 1 No INTERNAL & 2 No's EXTERNAL
HARDWARE	: STAINLESS STEEL
GASKET	: 'O' RING ENDLESS GASKET NEOPRENE / SILICON
NAME PLATE	: SS NAME PLATE CUM WARNING PLATE
GLASS	: HEAT RESISTANT CLEAR TYPE-A TOUGHENED GLASS (FLAT)
ENTRIES	: 2 Nos M20 / ½ "NPT / EQUIVALENT
VOLTAGE	: 140 V – 270 V (240 V AC)
POWER FACTOR	: ≥ 0.95
INPUT FREQUENCY	: 50 Hz.
EFFICACY	: ≥ 100 LUMEN PER WATT
COLOUR (CCT)	: 3000K / 5700K / 6500 K / OR AS SPECIFIED
CRI	: ≥ 80 RA
THD	: ≤ 10 % THD
SURFACE TEMP.	: MAX. 70°
SURGE PROTECTION	: 10 KV SPD
LED MAKE	: CITIZEN / OSRAM / BRIDGELUX / EQUIVALENT
DRIVER MAKE	: OSRAM / PHILIPS / FULHAM / EQUIVALENT - BIS APPROVED



OPTIONS

SR.NO	PARTICULAR	OPTIONS
1.	MATERIAL OF CONSTRUCTION	STAINLESS STEEL
2.	VOLTAGE	220V DC / 110 V AC / 110 V DC / 24 V AC
3.	LED TYPE	COB / SMD
5.	GLAND & PLUG	BRASS / SS / ALUMINIUM
6.	COLOUR SHADE	631 , 632 , 355 ,7031 ,7032 etc..

SELECTION CHART

SR.NO	WATTAGE	PART NO
1	20	BH/ 124 / 20
2	30	BH / 124 / 30
3	45	BH / 124 / 45

